


Port related channels

	Port VHF channel	Lock VHF channel	Working VHF channel seagoing vessels
Oostende	09		
Mercator lock		14	
Lock Demey		22 (D)	
Visserlock		22 (D)	
Zeebrugge	71		
Vandamme lock		68	
Vlissingen			
Buitenhaven	09		
Lock Vlissingen		18 (D)	
Sloehaven	09		
Terneuzen (Kanaal van Gent naar Terneuzen (KGT))			
Braakmanhaven	03		06
Westlock		06	06
Nieuwe Sluis		1028	
Eastlock		18 (D)	18 (D)
Centrale sluisorganisatie		69	
North Sea Port	05 (D)		
Sluis Hansweert		22 (D)	
Antwerpen Right bank			
Noordzeeterminal			06
Zandvliet lock		79 (D)	06
Berendrechtlock		79 (D)	06
Europaterminal			06
Boudewijnlock		71	08
Van Cauwelaertlock		71	08
Royerslock (under construction)		20 (D)	
Kattendijklock (Pleziervaart)		69	
Wintamlock		68	06
Antwerpen Left bank			
Deurganckdok			1027
Kieldrechtbok		01 (D)	1027
Kallock		01 (D)	08
Port of Antwerp	18		 we are not responsible for the correctness of the link

<https://www.portofantwerpbruges.com/en/shipping/inland-navigation-services/vhf-communication-channels>
(D)= Duplex VHF-channel












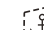

Contact details VTS Scheldt area

Scheldt Coordination Centre (GNA)	Tel. +31(0)88 79 80 758 +31(0)88 79 80 760 Fax +31(0)88 79 80 735 gna-scc@vts-scheldt.net
Traffic Centre Zeebrugge	Tel. +32(0)59 342 800 vts-zeebrugge@vts-scheldt.net
Traffic Centre Vlissingen	Tel. +31(0)88 79 80 790 vts-vlissingen@vts-scheldt.net
Traffic Centre Terneuzen	Tel. +31(0)88 79 80 500 vts-terneuzen@vts-scheldt.net
Traffic Centre Hansweert	Tel. +31(0)88 79 74 290 vts-hansweert@vts-scheldt.net
Traffic Centre Zandvliet	Tel. +32(0)3 20 28 200 vts-zandvliet@vts-scheldt.net
Traffic Centre Zelzate	Tel. +32(0)9 24 48 160 vts-zelzate@vts-scheldt.net

More information

www.vts-scheldt.net

LEGENDE

	EXTRA COMPULSORY REPORTING FOR ALL COMMERCIAL SHIPPING
	COMPULSORY INSTRUCTIONS FOR RECREATIONAL CRAFT
	Dutch Scheldt Shipping Information Report with general traffic information .
	English Scheldt shipping information with general traffic information .
	Mark safe water/mid-water buoy
	Cardinal buoy
	Blunt barrel (red)
	Sharp barrel (green)
	City/port
	Sector light
	Pilot station
	Anchor area
	Wattower

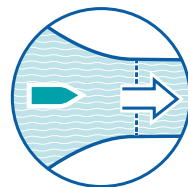


Compulsory listening watch for recreational craft equipped with VHF on the traffic channels



Compulsory reporting and listening watch for all commercial shipping on the traffic channels

Reporting for commercial shipping in the VTS Scheldt area.

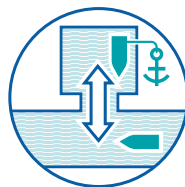


Inbound from sea

Depending on direction of approach, report 1/2 hour before arrival in the VTS area on the traffic channel belonging to the first sector you enter.

Message:

- Name of the vessel
- Position
- Draught
- Destination
- ETA pilot station

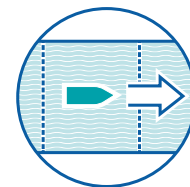


Leaving the fairway or departing from a port, berth, jetty or anchorage in the VTS area

Report on the traffic channel appropriate for the area (unless otherwise indicated in this brochure) before entering the fairway.

Message:

- Name of the vessel
- Position
- Draught
- Planned route
- Destination
- ETA pilot station
- For barges carrying one or more blue cones: the number of cones

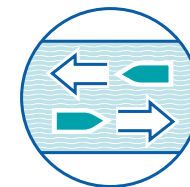


Passage boundary sector

Always report to the next sector, always on the traffic channel. A departure report to the previous sector is not required.

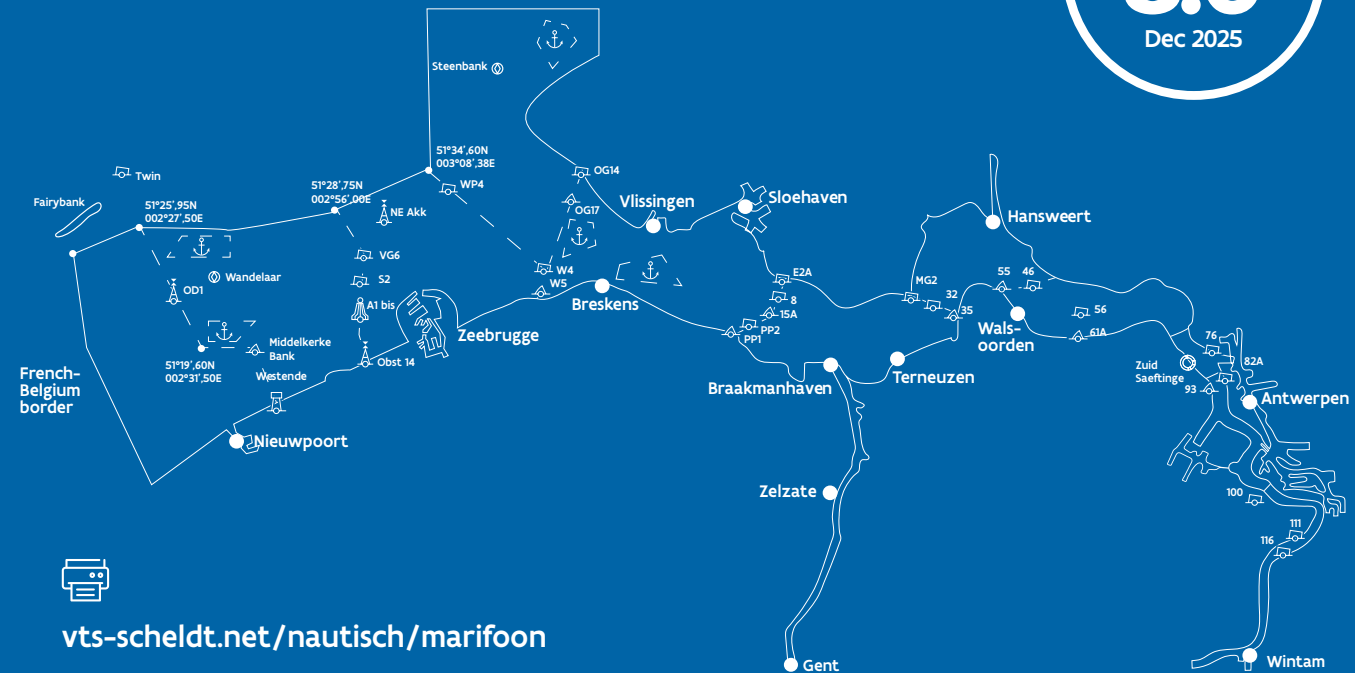
Message:

- Name of the vessel
- Position
- Planned route (where different routes are possible)



Self regulating traffic arrangements

Vessels need to make traffic arrangements directly with the other vessel.



VHF SECTORS

For safe and smooth shipping in the Scheldt area

version
8.0
Dec 2025

ATTENTION

- The compulsory language is Dutch or English.
- Make clear traffic arrangements directly with the other vessel.
- Always call another ship by the name of the vessel or by position and/or direction.
- VHF transmit power at a maximum of 1 Watt.
- This map is not meant for navigation.
- Read the VTS procedures via the QR code.



vts-scheldt.net/nautisch/marifofoon



Rijkswaterstaat
Ministry of Infrastructure
and Water Management

AGENTSCHAP
MARITIEME
DIENSTVERLENING en
KUST



Vlaanderen
is maritiem

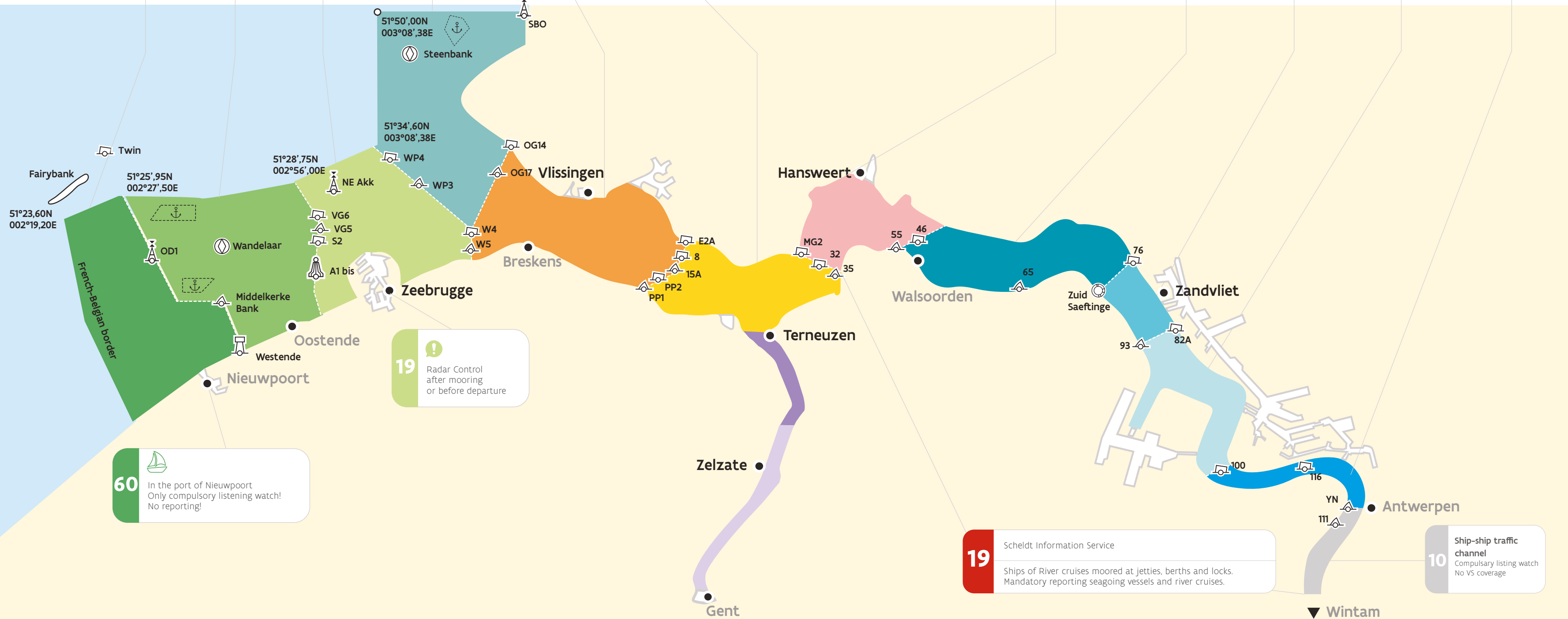
TRAFFIC CHANNELS
(compulsory listening watch)

- Traffic arrangements ship-ship
- Traffic information - general
- Shore based pilotage
- Compulsory reporting (also on the canal Ghent-Terneuzen)

RADAR CHANNELS

- Navigational assistance (radar information)
- Port information (when there is no specific port information channel available)

60 ENG H+15' Wandelaar approach	65 Traffic centre Wandelaar Pilot Wandelaar	69 NL H+10' Traffic centre Zeebrugge	64 Traffic centre Steenbank 79 Pilot Steenbank	14 NL H+50' Traffic centre Vlissingen When passing Vlissingen roads	03 Traffic centre Terneuzen When leaving the fairway passing - Buoy 22 - DOW Jetty - North Sea Locks	11 NL+00' VTS Terneuzen	61 VTS Gent	65 Traffic centre Hansweert	12 NL H+30' Traffic centre Zandvliet For seagoing vessels, inbound Antwerpen passing buoy 65 and Zuid Saeftinge Message: - Name of the vessel - Position - Destination	81 VTS Antwerp	
04 ENG H+15' Radar Zeebrugge	64 Traffic centre Steenbank	21 ENG H+55' Radar Vlissingen Before departure	03 Radar Terneuzen	Before departure (everyone) and at passage bridges (only maritime) - Name of the vessel - Position - Destination			65 Radar Hansweert	21 Radar Saeftinge	04 Radar Zandvliet	66 Radar Kruisschans	81 Radar Antwerp



60 In the port of Nieuwpoort
Only compulsory listening watch!
No reporting!

19 Radar Control
after mooring
or before departure

19 Scheldt Information Service
Ships of River cruises moored at jetties, berths and locks.
Mandatory reporting seagoing vessels and river cruises.

10 Ship-ship traffic channel
Compulsory listening watch
No VS coverage